

 SHOP SIZE- 30 SQM/323 SQF

# COFFEE BAR





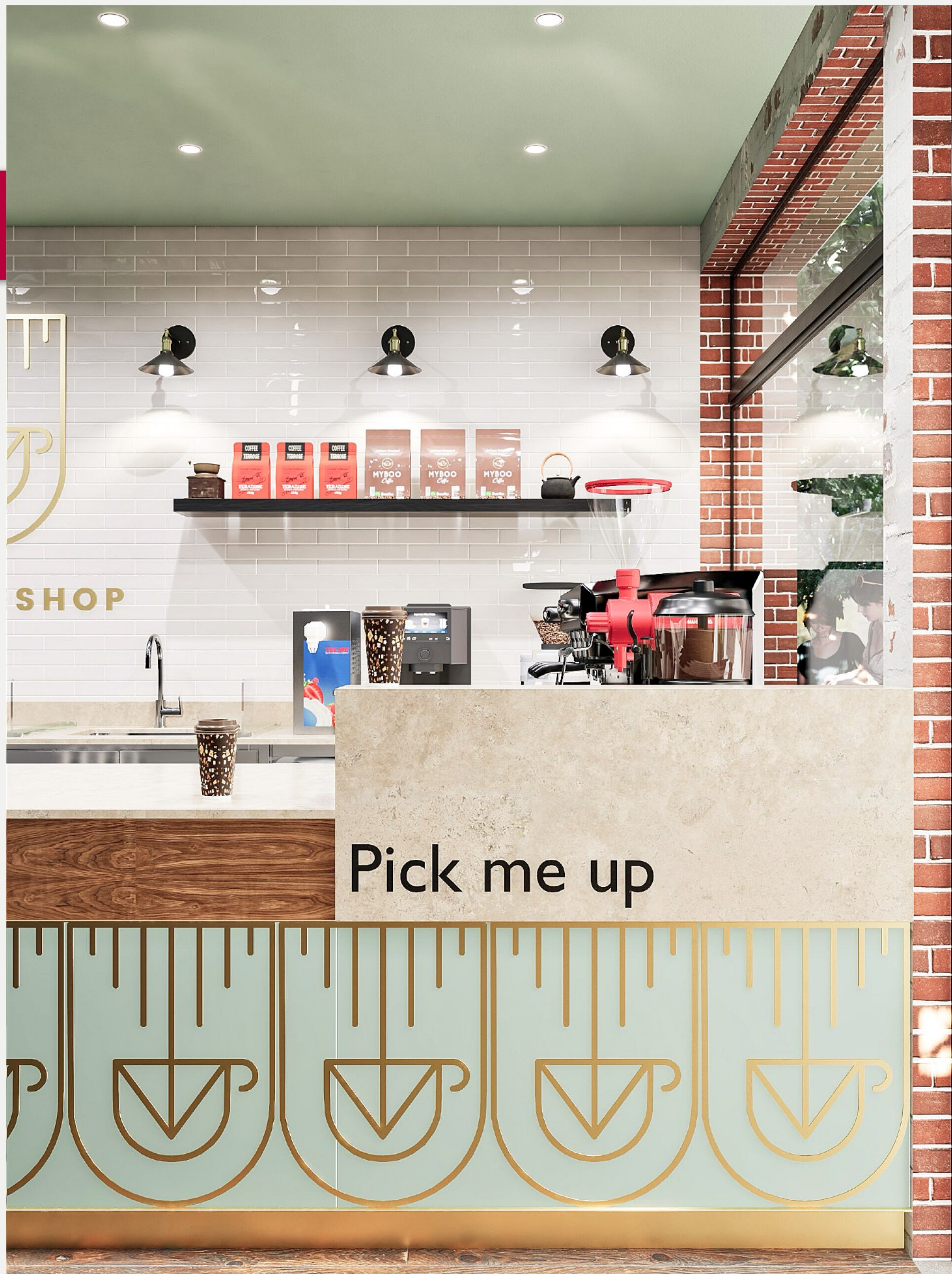
This neighborhood café was conceived with the intention of preserving and enhancing the original **identity of the space**, keeping the existing walls and antique parquet flooring untouched, allowing them to tell the story of the place. Built upon this authentic foundation, the design introduces a **contemporary layer** where furnishings interact with the existing elements, creating a seamless visual and material continuity.

**The counter**, as the central feature, combines **warm**, textured surfaces with distinctive **graphic details**: the **new logo takes shape and rhythm**, transforming into a **decorative pattern** that flows along the front and reappears on the walls, becoming the unifying thread of the entire space. Wall graphics inspired by the **world of coffee** further reinforce the informal and **welcoming atmosphere**, while neutral and natural tones highlight the contrast between old and new.

The result is a balanced and **recognizable environment**, where contemporary design does not overpower but rather complements and enhances what already exists, making the café both **familiar** and **distinctive**.





















## VIRTUAL TOUR

Discover our virtual environments: **explore in 3D the spaces designed for you**, experience immersive engagement, and make confident decisions. **Find the right inspiration** to create a tailor-made, innovative, and unique venue.





## MOODBOARD

The counter of this interior design features a contemporary and elegant style, conceived for a coffee shop with a refined yet welcoming atmosphere. Its structure is linear and compact, with a **strong horizontal development** that conveys order and visual cleanliness. The worktop is made of a **light stone-effect finish**, durable and bright, creating a pleasant contrast with the **dark wood veneered** front cladding, which adds warmth and a natural character.

The lower front section becomes the most distinctive element of the composition: a decorative panel in a muted **sage green tone**, enriched with a **golden geometric pattern** that recalls the stylized **coffee cup logo** displayed on the back wall. This detail creates visual continuity and strengthens the brand identity.

The overall design conveys a balance between **soft industrial style** and **luxury details**, thanks to the harmonious combination of wood, light surfaces, golden metals, and matte finishes, making the counter the true scenic focal point of the space.

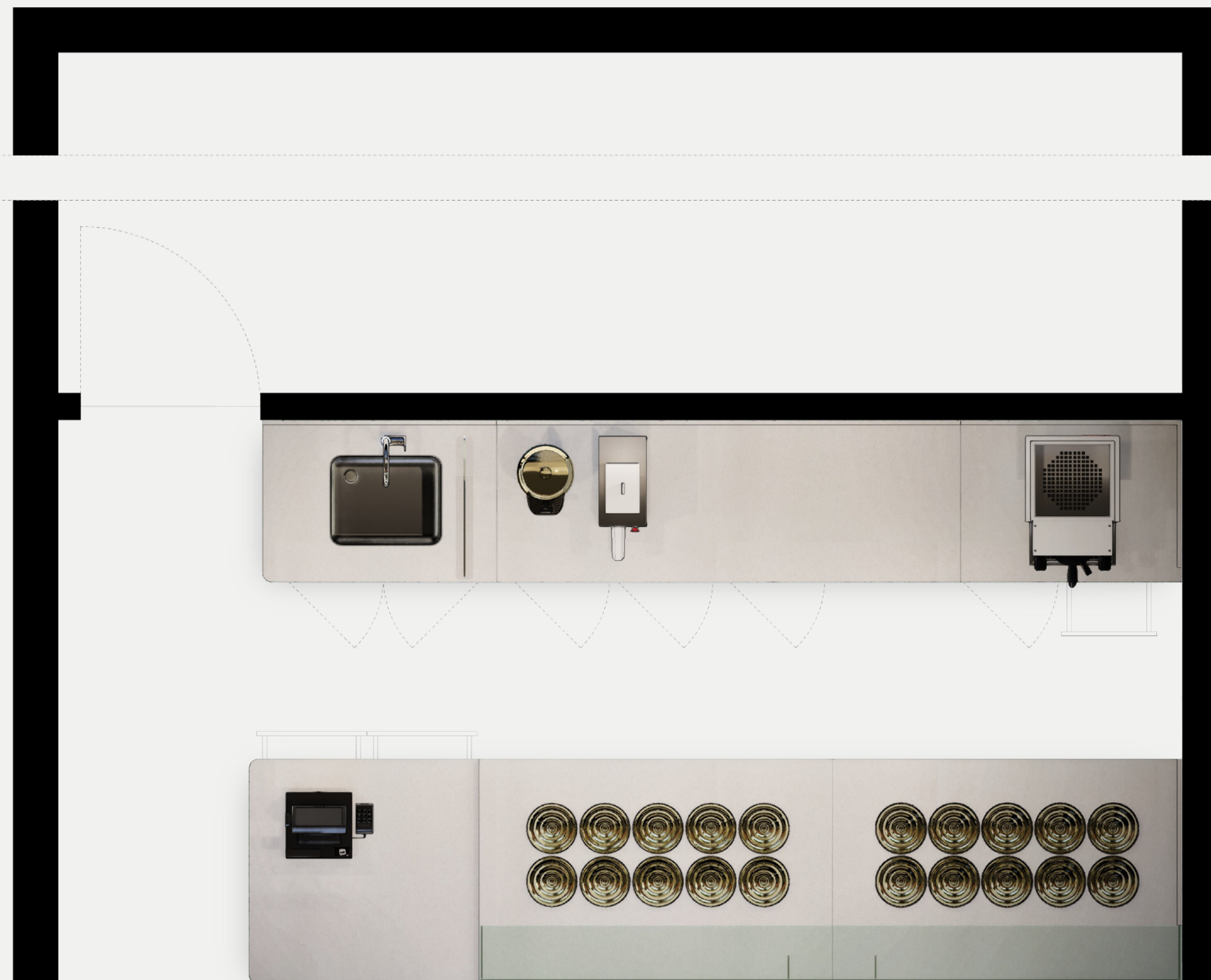


**PANTONE®**  
16-1124 TCX  
Sage Green



## FLOOR PLAN

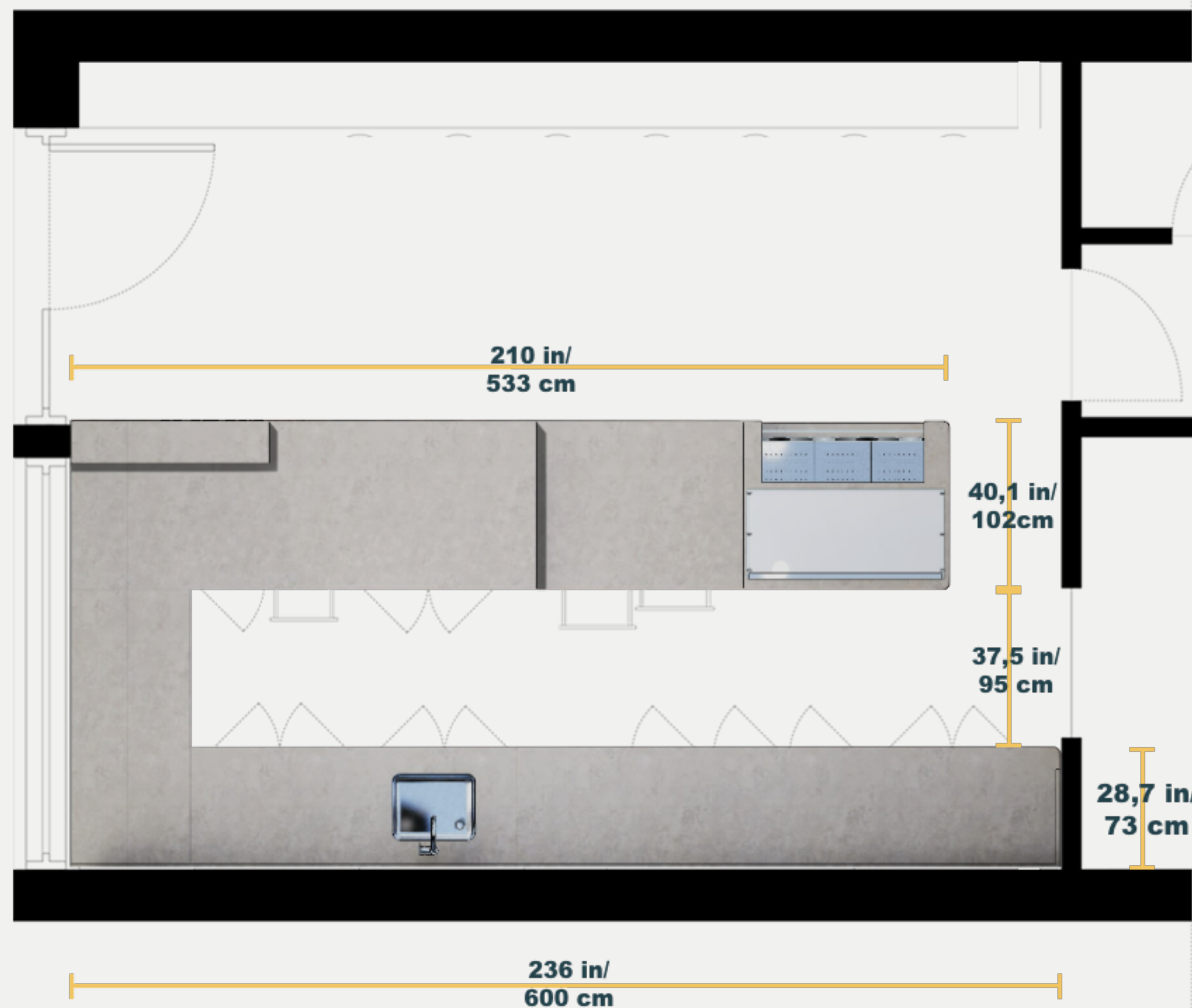
The internal organization, developed within **just 30 sqm / 323 sqf**, is designed to ensure an efficient and **intuitive flow**, perfectly suited to a café environment. The **grab-and-go display**, positioned next to the **cashier counter**, supports quick product selection in continuity with the **ordering point**. From here, the path naturally leads to the **coffee preparation** and **waiting area**, oriented toward the exterior, facilitating service and maintaining a smooth flow even **during peak hours**.



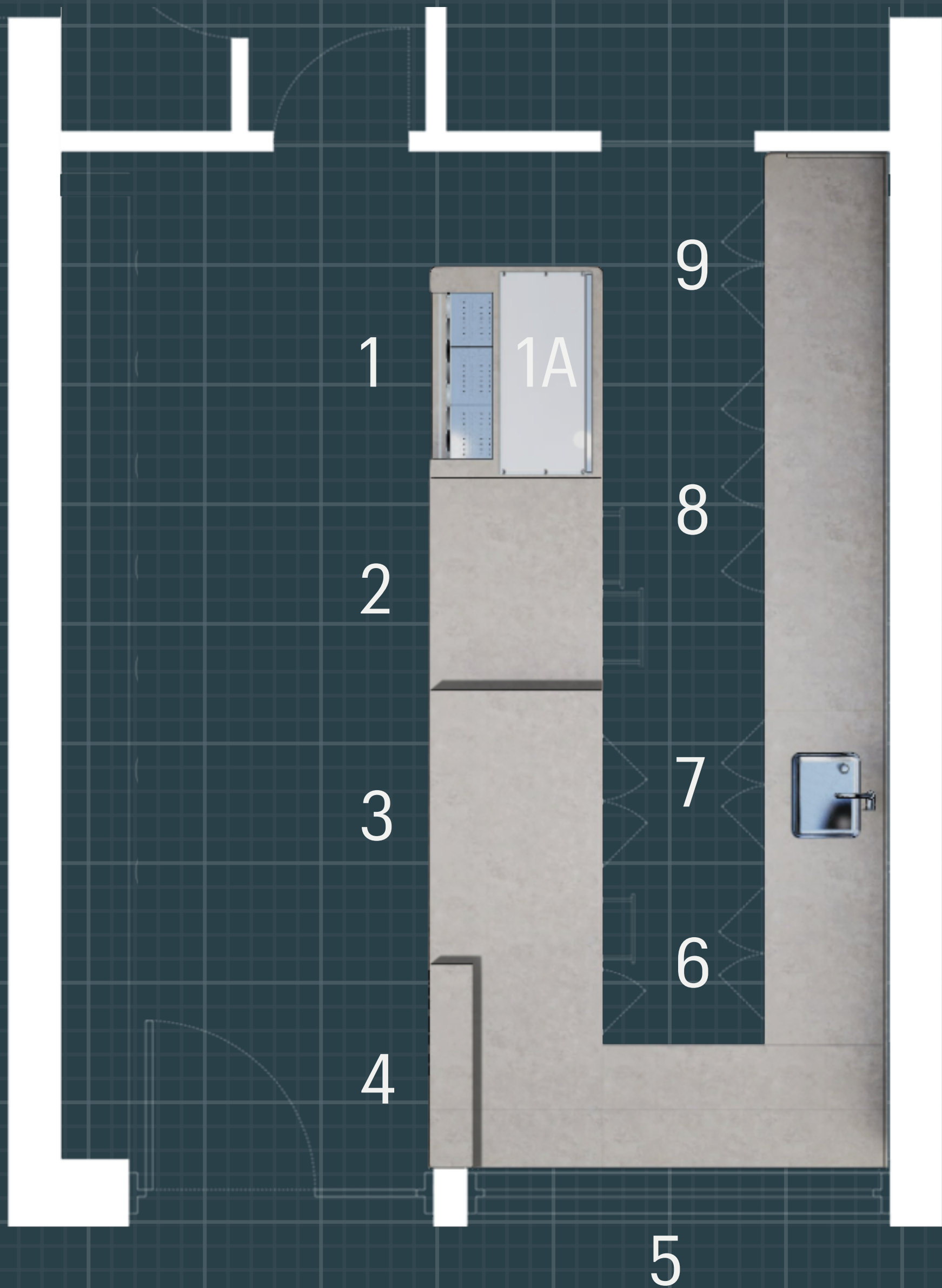


## LAY-OUT

The layout is designed to be **intuitive** and **fluid**, guiding customers along a natural path from the entrance to the counter. The linear arrangement **optimizes space** and streamlines operations, clearly separating service, display, and preparation areas. The counter becomes both the **visual** and **functional focal point**, while the **back area** is organized to ensure **operational efficiency without compromising aesthetics**. The result is a clean and **welcoming environment** where functionality and usability integrate seamlessly.



## FURNITURE LIST



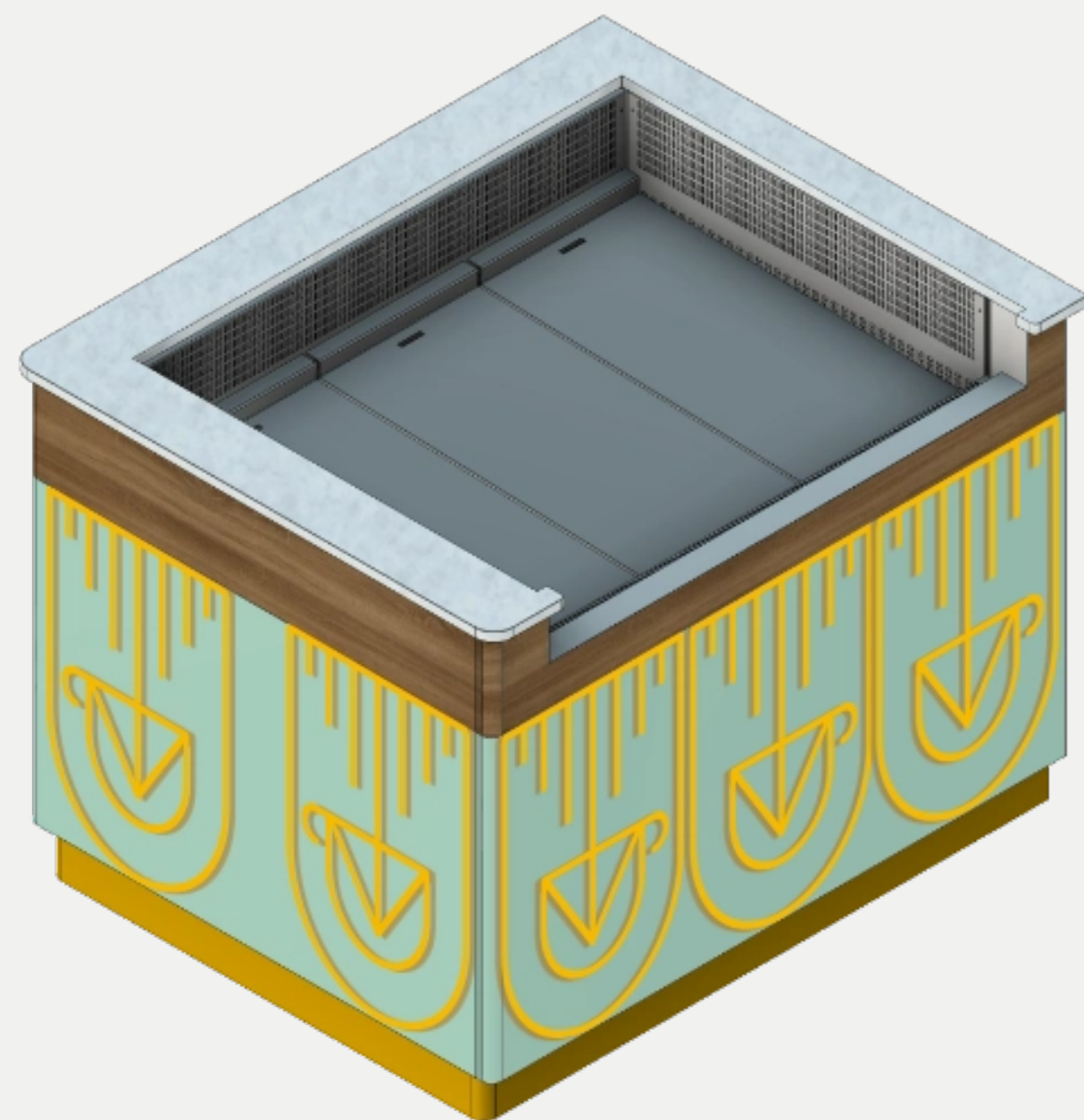
### Furniture list - front counters:

- 1-Refrigerated Grab & Go Display case
- 1A-Display case
- 2-Checkout counter
- 3-Front Counter 2 Doors Refrigerated
- 4-Front Counter Coffee Machine

### Furniture list - back counters:

- 5-Back neutral Counter
- 6-Back Counter Washer Cabinet+neutral cabinet
- 7-Back Counter Counter Sink
- 8-Back Counter 3 Doors Refrigerated
- 9-Back Counter

## 1 - REFRIGERATED GRAB & GO DISPLAY CASE



- Stainless steel frame
- Front Glass
- Front panels made galvanized steel
- Plinth coated made galvanized steel
- Compressor unit

**Grab & Go Display case integrated into the furniture, entirely made of stainless steel.**

Ensuring maximum product visibility at all times. Designed with a strong focus on ergonomics, it offers customers an optimal view of the drinks.

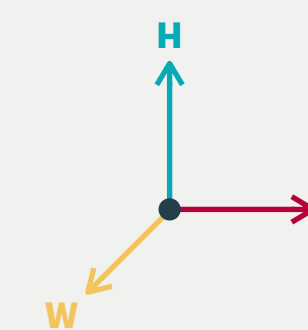
It features a **professional control system** for precise temperature management and **integrated refrigeration units**. The **Silestone® Cosentino** surface guarantees durability and easy cleaning, while the front panels in **painted galvanized steel** with high-resistance finishes complete the structure, combining robustness with essential aesthetics.

Checkout counter top in Silestone®

Dim: **W**x**L**x**H**

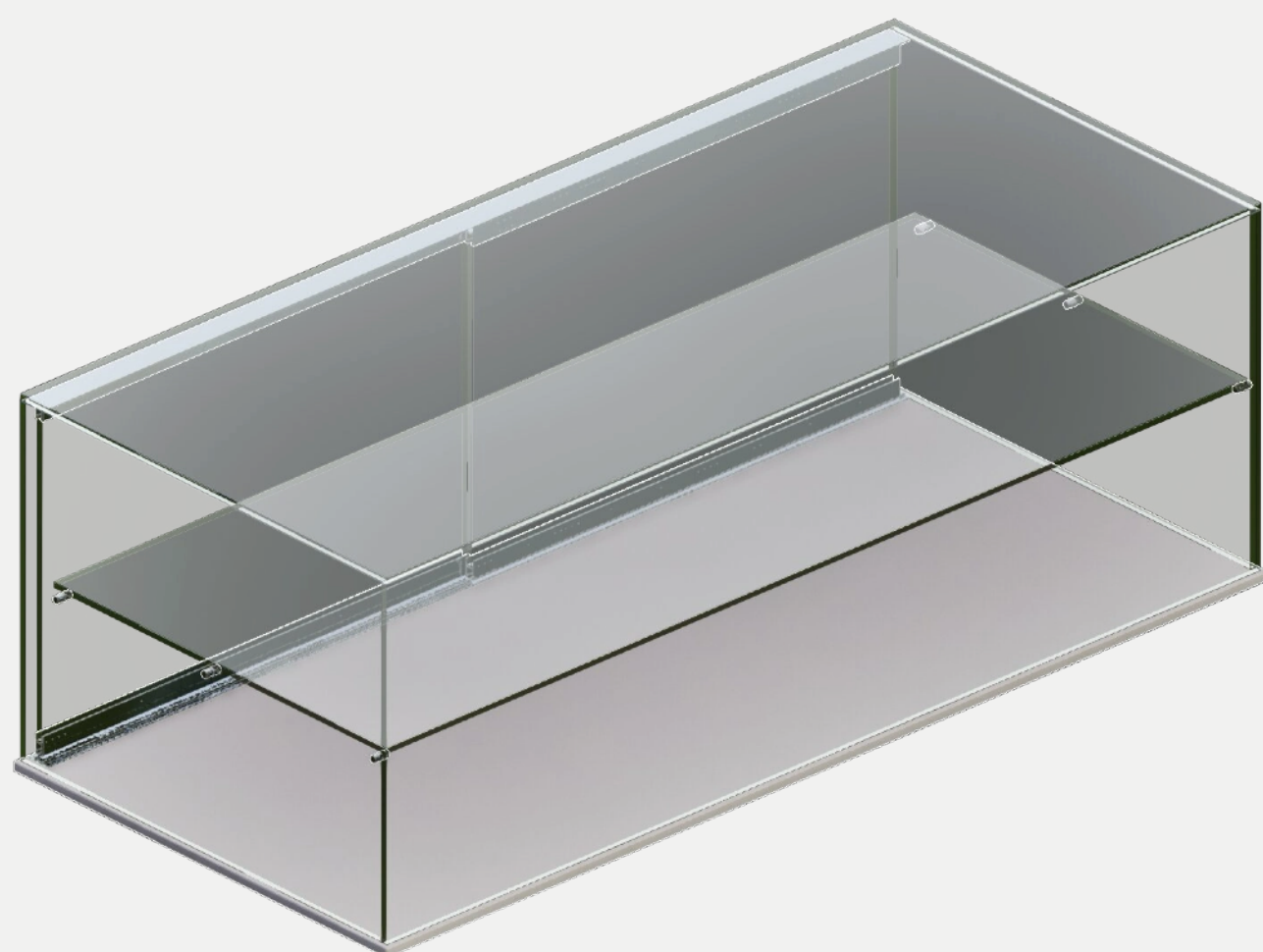
inch: **40,1** x **49,2** x **33,8**

cm: **102** x **125** x **86**





## 1A - DISPLAY CASE



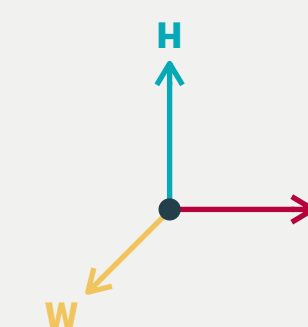
This display case is fully made of **tempered glass**, ensuring **durability**, **transparency**, and a **refined aesthetic**. It features **sliding plexiglass** doors that provide easy access while maintaining **hygiene** and **product protection**. Ideal for showcasing breakfast items, pastries, sandwiches, and snacks, it offers both practicality and **visual appeal**. Easy to clean and maintain, it is perfectly suited for professional environments, representing an elegant and functional solution for bars, cafés, and food service areas.

Checkout counter top in Silestone®

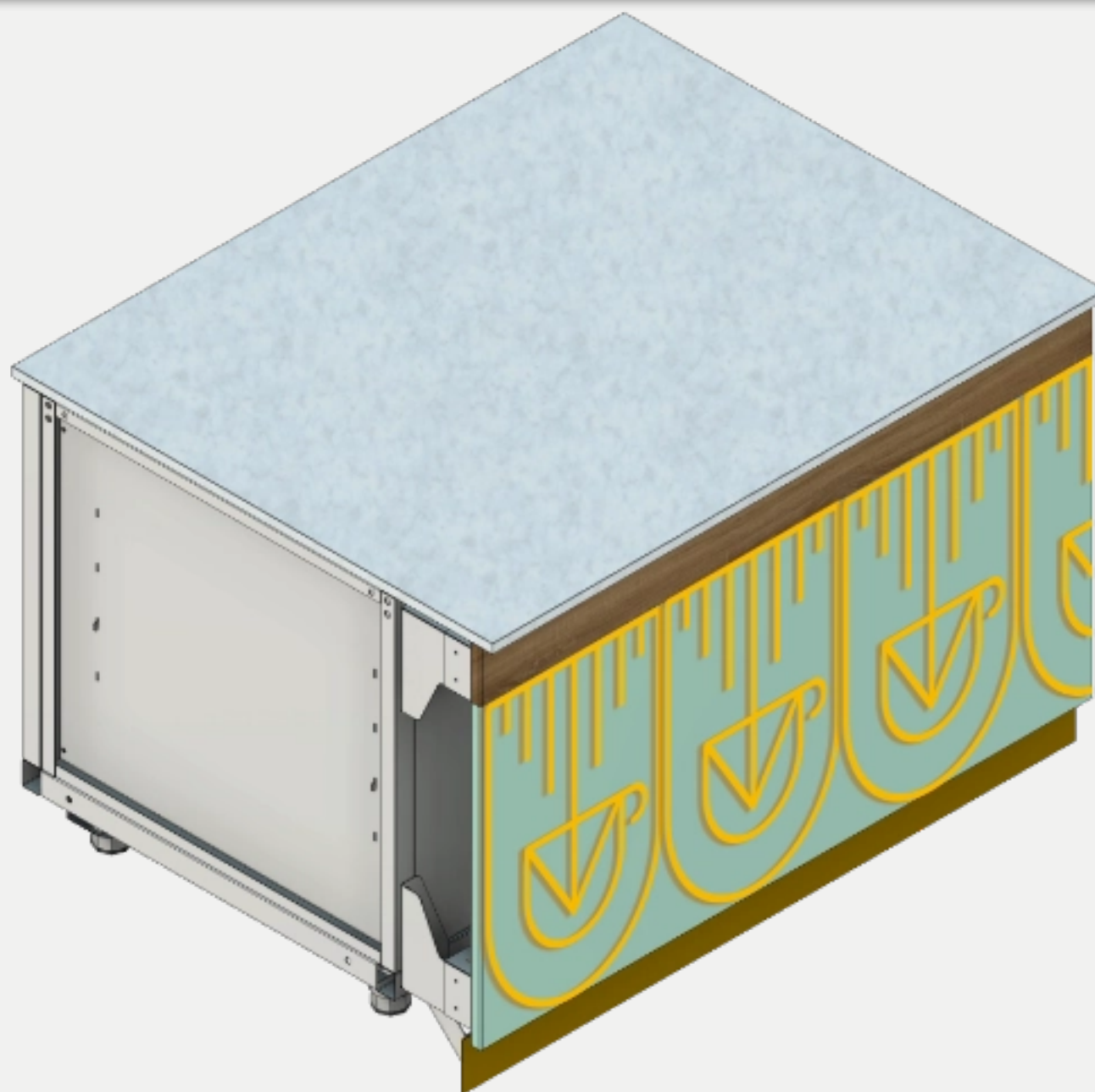
Dim: **W**x**L**x**H**

inch: **40,1** x **49,2** x **33,8**

cm: **102** x **125** x **86**



## 2 - CHECKOUT COUNTER



- Stainless steel frame
- 2 Stainless steel drawer
- 1 Stainless steel shelves
- Front panels made galvanized steel
- Plinth coated made galvanized steel

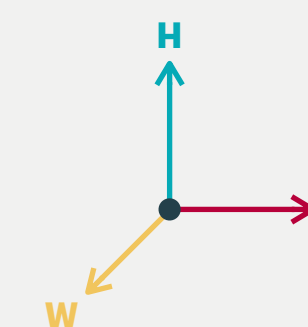
The checkout counter, with a **fully stainless steel frame**, is designed to ensure efficiency and organization in any operational setting. Equipped with **large stainless steel drawers and shelf**, it offers a durable, hygienic, and functional solution for space management. The Silestone® Cosentino surface guarantees long-lasting performance and easy cleaning, while the **front panels**, made of Silestone with **high-resistance finishes**, complete the structure by combining strength with essential aesthetics.


Pozzetti counter top in Silestone®

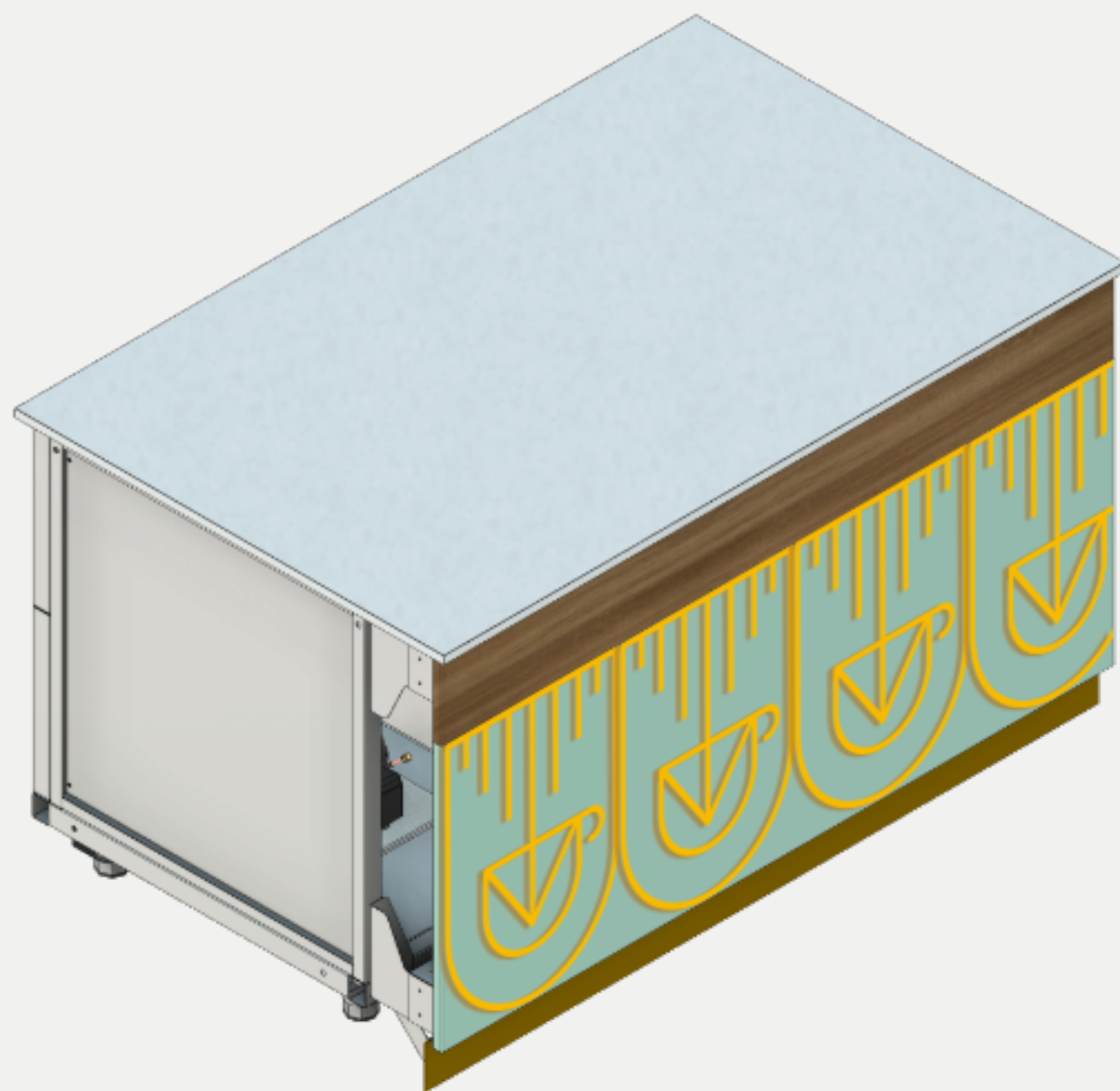
Dim: **W**x**L**x**H**

inch: **40,1** x **49,6** x **37**

cm: **102** x **126** x **94**



 **3 - FRONT COUNTER 2 DOORS REFRIGERATED**



- Stainless steel frame
- 2 Doors refrigerated cabinet
- compressor unit
- Front panels made galvanized steel
- Plinth coated made galvanized steel

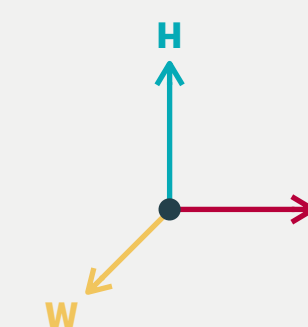
The refrigerated cell, with a fully stainless steel structure, is designed to ensure maximum hygiene, durability, and reliability. Equipped with an **on-board refrigeration unit**, it provides precise temperature control in all operating conditions. The **Silestone® Cosentino** surface completes the system, offering high durability and easy cleaning.

Pozzetti counter top in Silestone®

Dim: **W**x**L**x**H**

inch: **40,1** x **63,7** x **37**

cm: **102** x **162** x **94**



## 4 - FRONT COUNTER COFFEE MACHINE



- Stainless steel frame
- 1 Stainless steel Cabinet doors
- 2 Stainless steel shelves
- Front panels made galvanized steel
- Plinth coated made galvanized steel

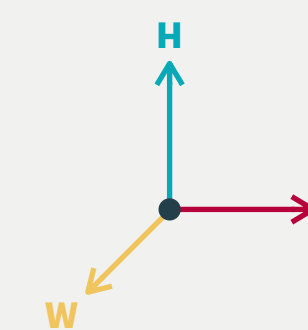
The coffee machine back counter, made entirely of stainless steel with a stainless steel door, is designed to ensure durability, hygiene, and everyday practicality. Equipped with **two hoppers for coffee preparation**, it offers an efficient and functional solution for industry professionals. The **Silestone<sup>®</sup> Cosentino** surfaces ensure long-lasting performance, easy cleaning, and a refined look—ideal even for areas visible to customers.

Pozzetti counter top in Silestone<sup>®</sup>

Dim: **W**x**L**x**H**

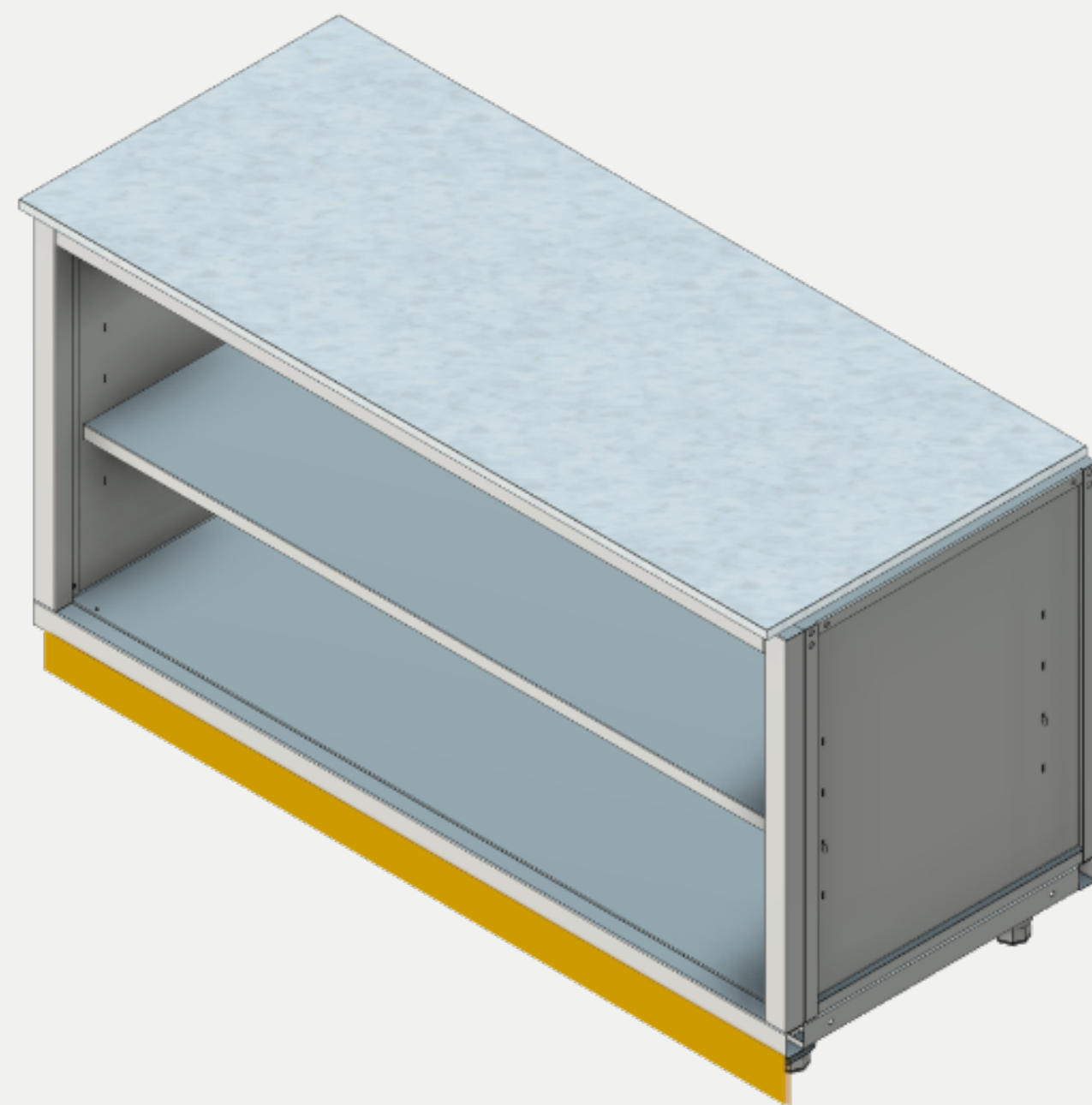
inch: **40,1** x **39,3** x **37**

cm: **102** x **100** x **94**





## 5 - BACK COUNTER



- Stainless steel frame
- 1 Stainless steel shelves
- 2 Stainless steel Cabinet doors
- Plinth coated made galvanized steel

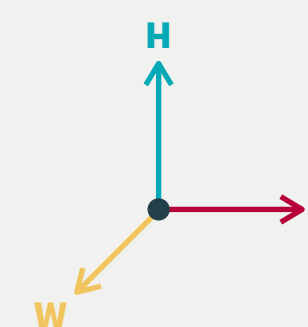
A **fully stainless steel frame**, is designed to ensure efficiency and organization in any operational setting. Equipped with **large stainless steel shelf**, it offers a durable, hygienic, and functional solution for space management. The **Silestone® Cosentino** surface completes the system, offering high durability and easy cleaning.

Pozzetti counter top in Silestone®

Dim: **W**x**L**x**H**

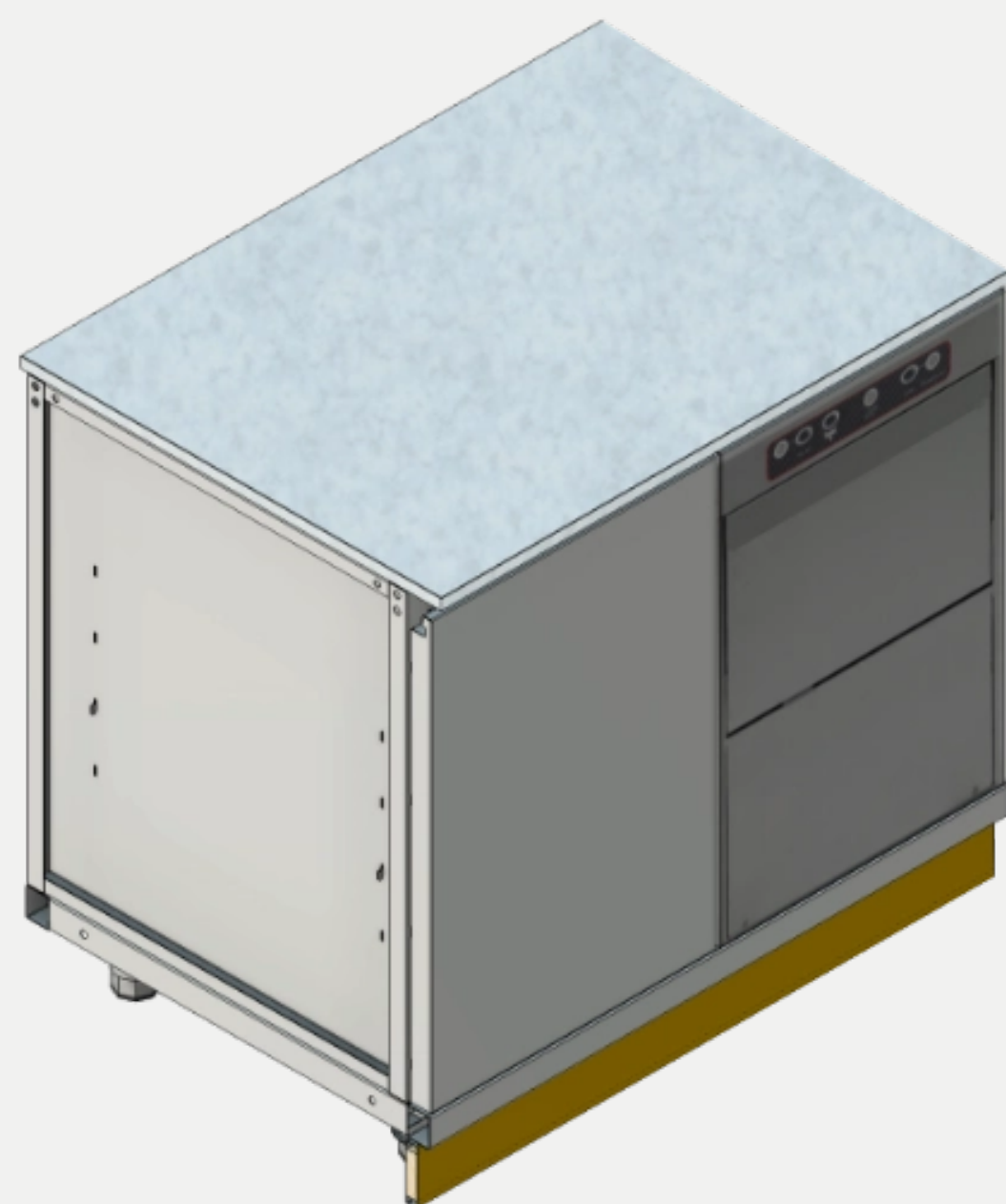
inch: **28,7** x **41,7** x **37**

cm: **73** x **106** x **94**





## 6 - BACK COUNTER WASHER CABINET+ NEUTRAL CABINET



- Stainless steel frame
- 1 Stainless steel Cabinet doors
- 1 stainless steel washer cabinet
- Plinth coated made galvanized steel

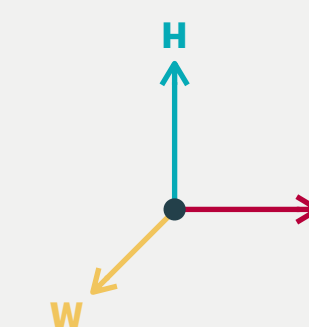
The checkout counter, with a **fully stainless steel frame**, is designed to ensure efficiency and organization in any operational setting. Equipped with **large stainless steel shelf**, it offers a durable, hygienic, and functional solution for space management. The Silestone® Cosentino surface guarantees long-lasting performance and easy cleaning.

Pozzetti counter top in Silestone®

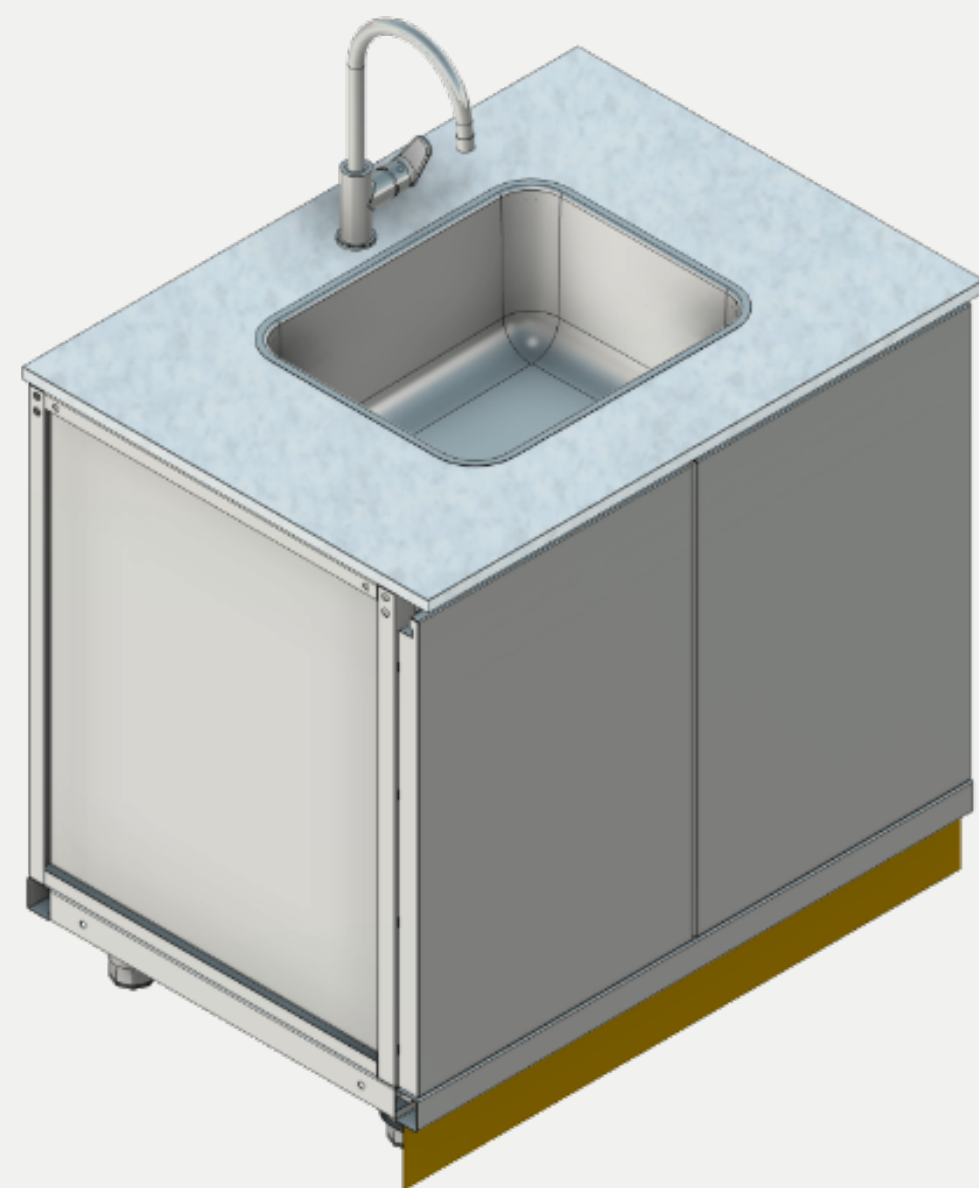
Dim: **W**x**L**x**H**

inch: **28,7** x **39,3** x **37**

cm: **73** x **100** x **94**



## 7 - BACK COUNTER SINK



- Stainless steel frame
- 2 Stainless steel Cabinet doors
- Stainless steel sink and tap
- Plinth coated made galvanized steel

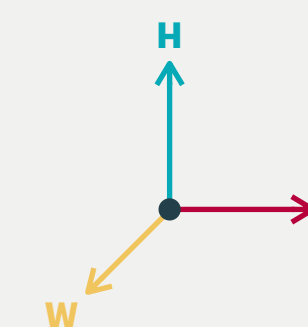
The professional **sink unit**, with a **fully stainless steel frame and doors**, is designed to ensure durability and functionality in demanding work environments. Equipped with a **large sink** and **professional faucet**, it combines practicality and ease of use while remaining **elegant and visually appealing to the public**. The Silestone® Cosentino surface guarantees durability and easy cleaning


Pozzetti counter top in Silestone®

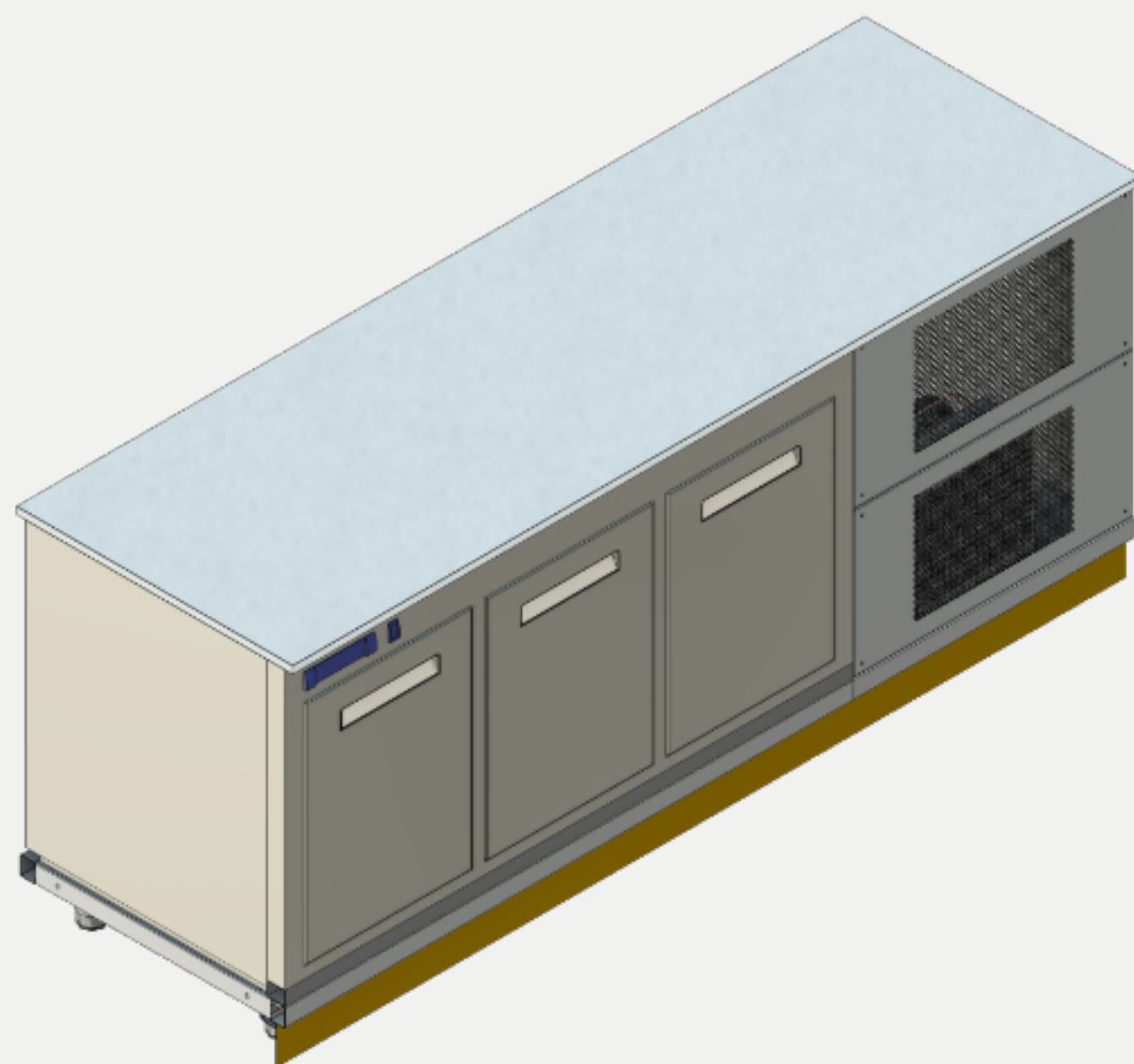
Dim: **W**x**L**x**H**

inch: **28,7** x **39,3** x **37**

cm: **73** x **100** x **94**



 8 - BACK COUNTER 3 DOORS REFRIGERATED



- Stainless steel frame
- 3 Doors refrigerated cabinet
- compressor unit
- Plinth coated made galvanized steel

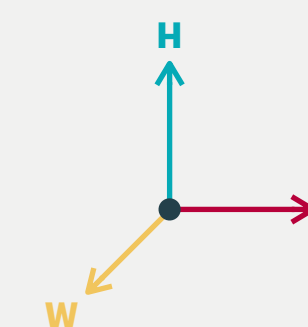
The refrigerated cell, with a fully stainless steel structure, is designed to ensure maximum hygiene, durability, and reliability. Equipped with an **on-board refrigeration unit**, it provides precise temperature control in all operating conditions. The **Silestone<sup>®</sup> Cosentino** surface completes the system, offering high durability and easy cleaning.

Pozzetti counter top in Silestone<sup>®</sup>

Dim: **W**x**L**x**H**

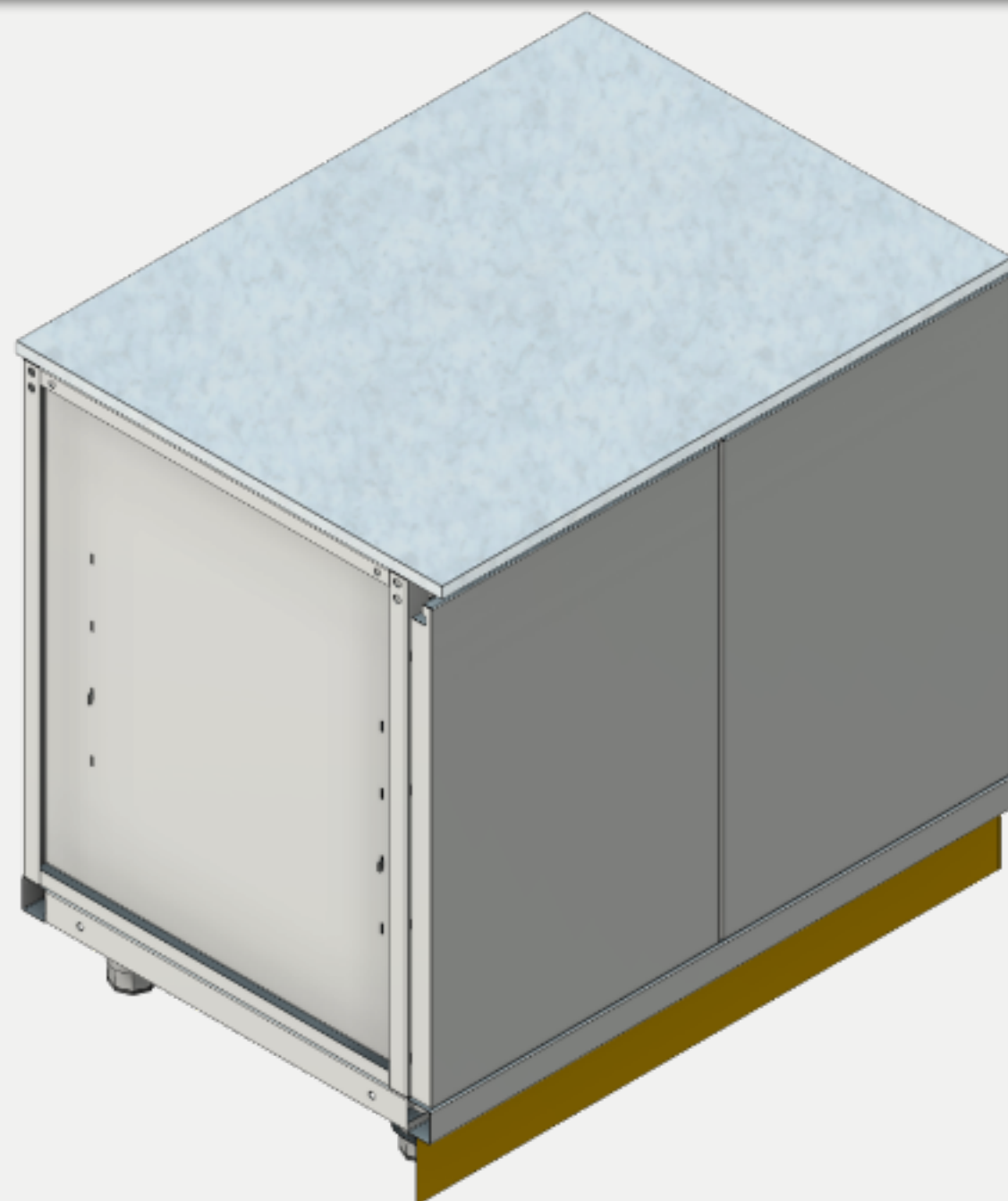
inch: **28,7** x **82,7** x **37**

cm: **73** x **210** x **94**





## 9 - BACK COUNTER



- Stainless steel frame
- 1 Stainless steel shelves
- 2 Stainless steel Cabinet doors
- Plinth coated made galvanized steel

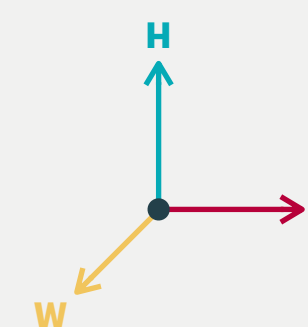
The neutral back counter, with a **fully stainless steel frame**, is designed to ensure efficiency and organization in any operational setting. Equipped with **large stainless steel shelf, (or tailor made lay out)** it offers a durable, hygienic, and functional solution for space management. The Silestone® Cosentino surface guarantees long-lasting performance and easy cleaning. The **front doors panels**, made totally **stainless steel** material.

Pozzetti counter top in Silestone®

Dim: **W**x**L**x**H**

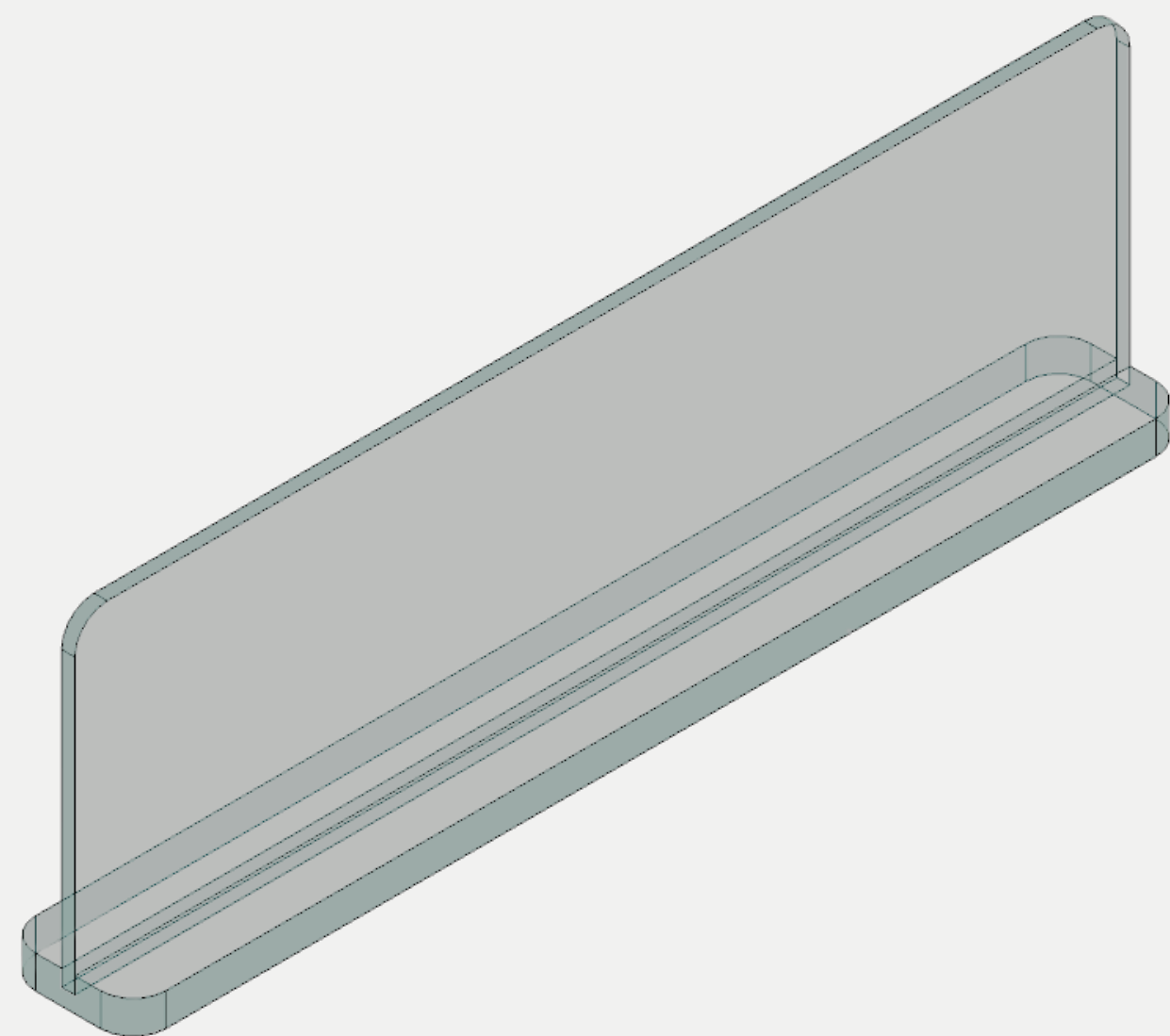
inch: **28,7** x **41,7** x **37**

cm: **73** x **106** x **94**





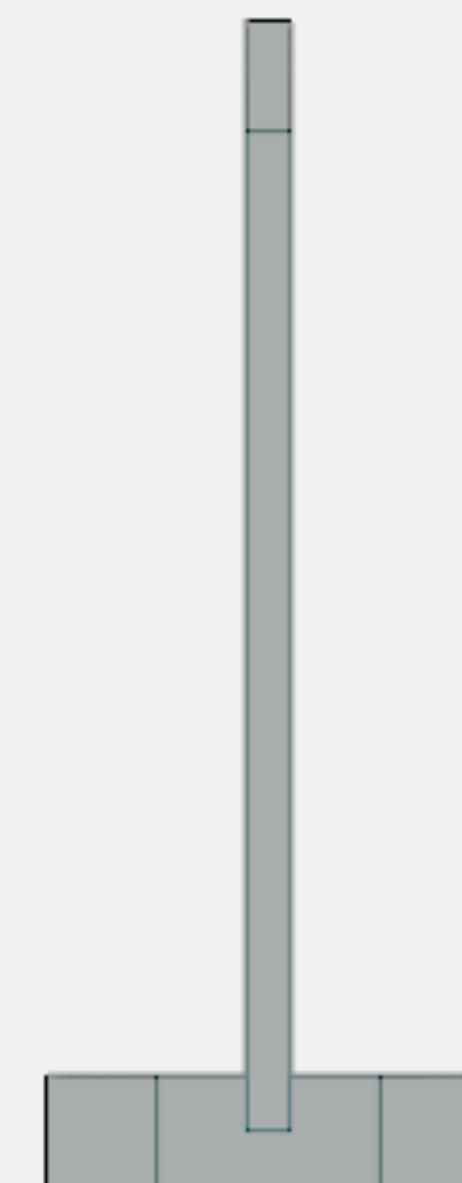
## SPLASH GUARD



-N2 Splash Guard

### Transparent polycarbonate splash guard

Provides safe protection while keeping the work area clean, without compromising the aesthetic of the space thanks to its transparency and discreet design.

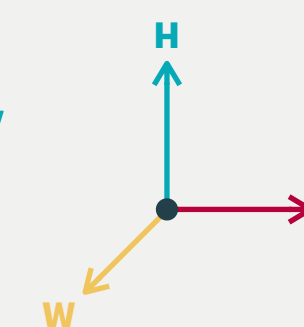


Polycarbonate

Dim: **W**x**L**x**H**

inch: **27,5** x **4,7** x **8,7**

cm: **70** x **12** x **22**





## I RIVESTIMENTI: I PIANI

# silestone®

By COSENTINO®

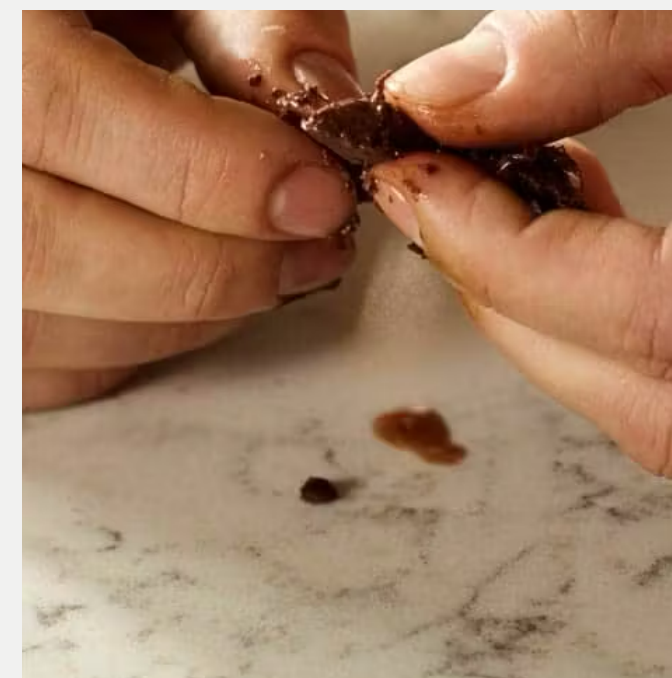
A leading brand for over 30 years that inspires designs for kitchens, bathrooms and commerciale surfaces.

**25 Years warranty**  
Hybrid mineral surfaces to create innovative spaces that endure over the time.

### Advantages and properties



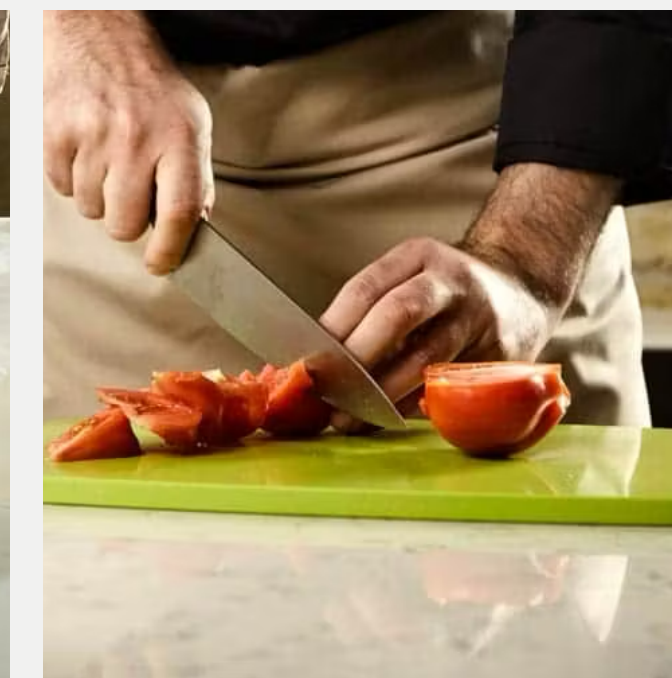
**Elevata resistenza ai graffi**  
l'uso e l'usura quotidiana non graffiano Silestone.



**Elevata resistenza alle macchie**  
La bassa porosità li rende altamente resistenti alle macchie.



**Alta resistenza agli urti**  
Altamente resistente agli impatti quotidiani.

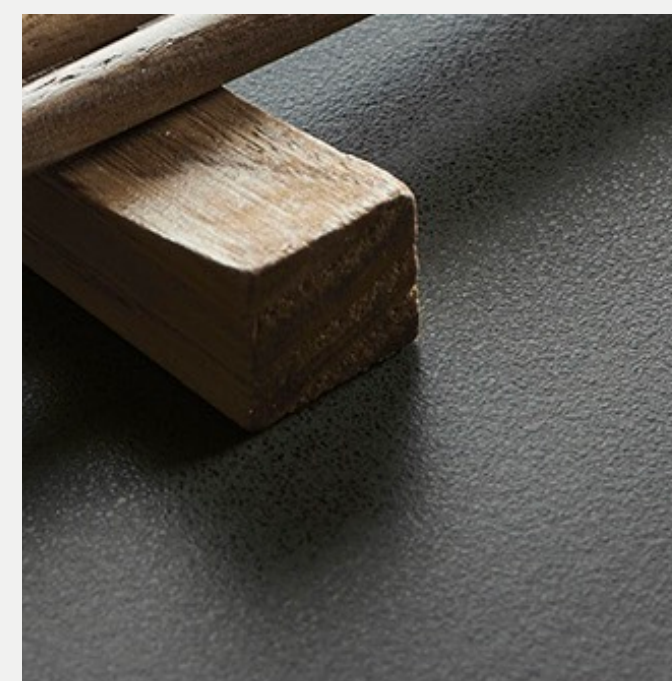


**Elevata resistenza agli acidi**  
La bassa porosità gli impedisce di essere danneggiato da macchie aggressive.

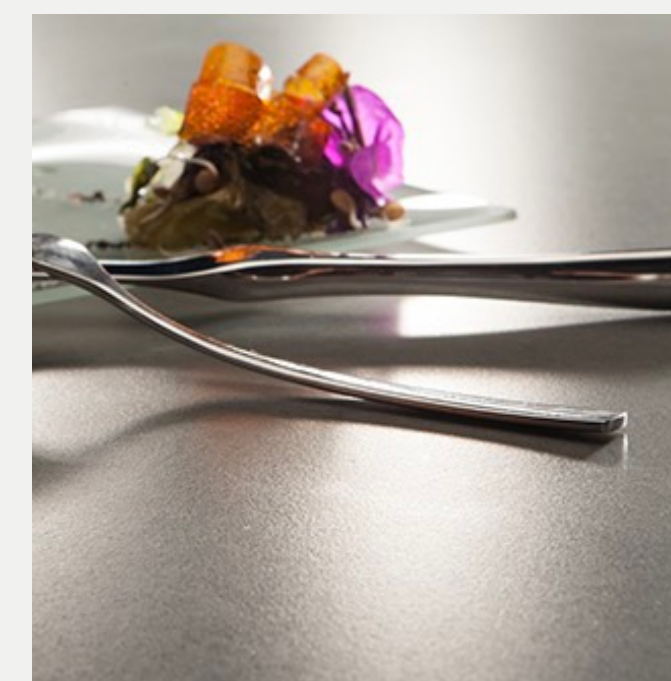
### Finish



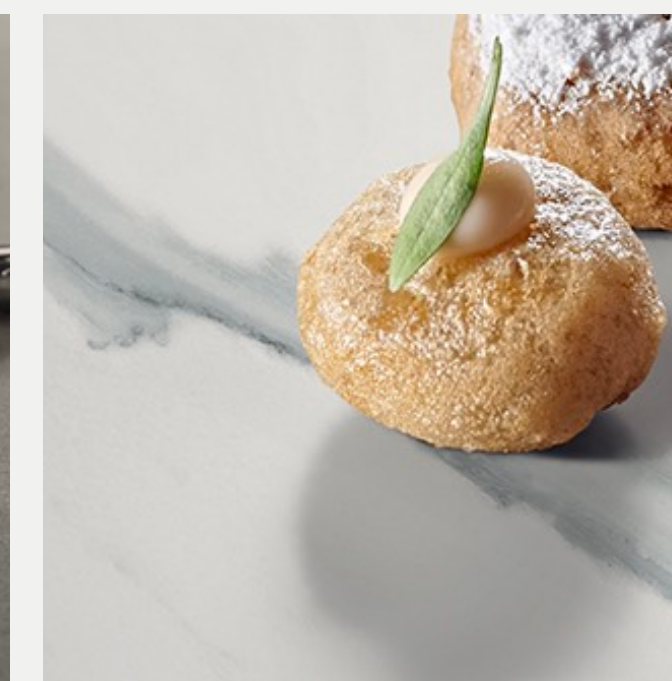
**Polished**  
More vibrant and intense colors and reflections



**Suede**  
Soft and pleasant feel with full color consistency



**Mate**  
Solid and satin color

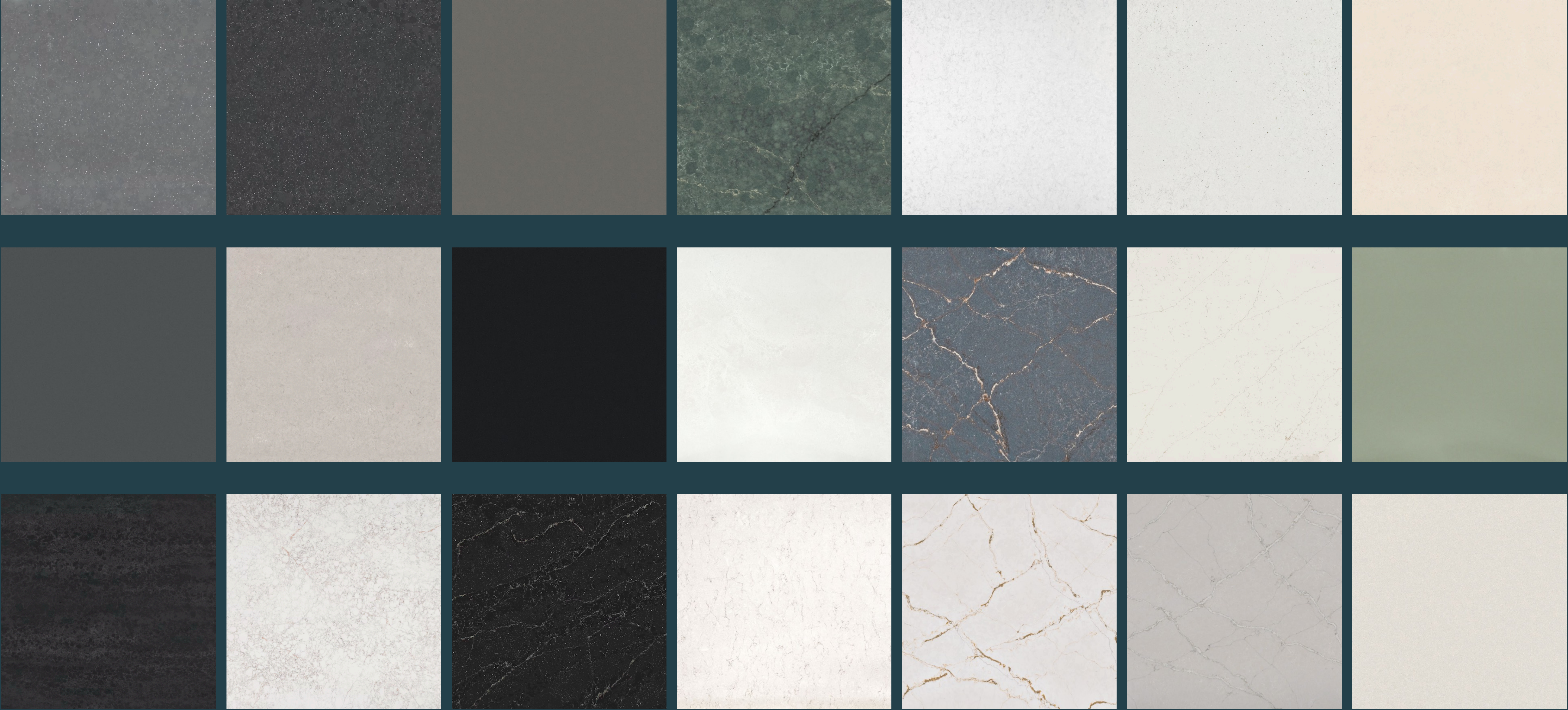


**Velvet**

## Maintenance



Click the colors to see them in use



 **COLORS WITHOUT LIMITS**



[RAL Chart](#)

**PANTONE®**

[Pantone Chart](#)

**kerakoll**

[Kerakoll Chart](#)

With TekneItalia, you're never confined to a preset color palette. **We offer access to thousands of colors** through internationally recognized systems like **RAL** and **PANTONE\***, ensuring your customization is truly **limitless**. Whatever shade you envision, we can bring it to life—without compromises and without boundaries.

 **COLORS WITHOUT LIMITS**

# 3M

# DI-NOC™

**3M™ DI-NOC™ Architectural** E-Series PO Polyolefin Film are film surface finishes that give you a range of choices as you pursue your sustainability goals. These films are made with approximately 99.5% non-PVC (non-vinyl) materials, and do not contain more than 0.5% of a polyvinyl chloride-based component. **These finishes are available in various patterns and textures – wood, plaster, concrete and more, and are a great way to upgrade your interior look without all the disruption.** 3M™ Comply™ Adhesive technology virtually eliminates air bubbles, simplifying and speeding up the application process.



**Catalogue 3M Di - NOC**



## TOTAL CUSTOMIZATION

With TekneItalia, every piece of furniture becomes a **unique expression of your brand**. **Integrated “under-surface” digital graphics, stencil techniques, and glossy or matte finishes are just some of the available options.** Thousands of combinations of materials, colors, and details allow you to create truly tailor-made solutions, with no limits to customization.





## PROMINENT DETAILS

**Laser-engraved details add depth and personality to the furniture**, with the option to be painted or finished with an elegant 24-carat gold plating. **Custom-made**, these exclusive elements transform any space, making your venue unique and **instantly recognizable**.



THIS IS A **TEKNEITALIA**® PROJECT

**Tekneitalia** is a company founded **over 15 years ago** with the clear and ambitious goal of revolutionizing the way business is done in the HO.RE.CA. sector. Through **carts and mobile devices with iconic and highly recognizable design**, we have made **beauty a tool for work**. From day one, our mission has been to offer clients **not only functional tools but true extensions of their identity**: objects capable of expressing **values, emotions**, and visions through a refined and **timeless aesthetic**.

**TEKNEITALIA**®  
Brows our website



**TEKNEITALIA**®



**YOUR PROJECT, GUIDED BY EXPERT**

A dedicated team of **architects and graphic designers** will support you at every stage of development, working closely with you to create the best version of your project. Thanks to 3D modeling in a virtual environment, you'll be able to explore every detail of your venue before implementation, choosing each element with precision and ensuring a flawless result.

Contact us and **share your needs** to discover how we can **turn your project into reality**. Receive detailed information and a personalized quote, with **no obligation**.

**[INFO@TEKNEITALIA.COM](mailto:INFO@TEKNEITALIA.COM)**

**MOBILE OFFICE: +39 328 221 34 74**

**MOBILE SALES EXPORT: + 39 366 421 23 63**

**TEKNEITALIA USA: +1 212 810 6725**